



The MA-210 is a Network Based Automation System, that is the culmination of many years of designing and supplying Broadcasters of all levels with cost effective, reliable, and versatile Station Automation Packages.

Containing all of the features MATCO has developed over the years, plus many new ones, the MA-210 is capable of scheduling and controlling an almost unlimited device pool using four or eight port Network Serial Adaptors. These devices include Video Servers, VTRs, DVD Devices, CGs, GPI Equipment, etc.

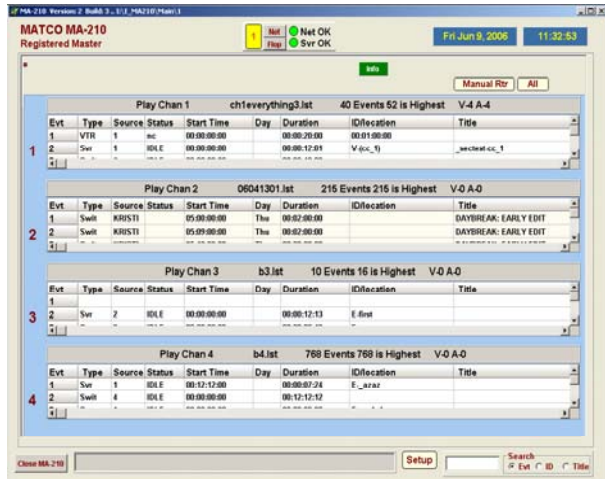
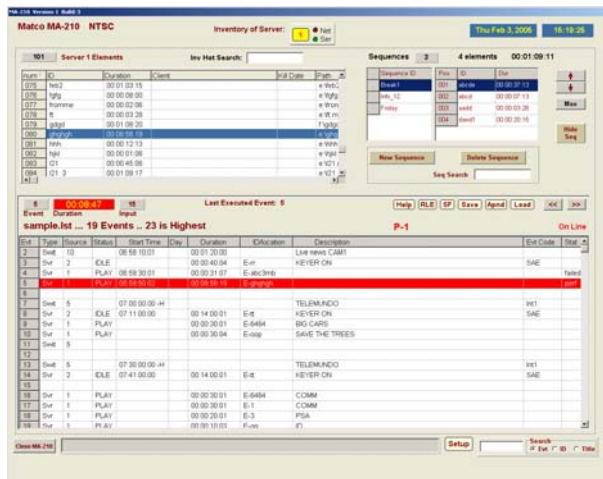
Configuration:

- User selectable number of PlayList Channels (up to 20)
- A Record List Channel for scheduling Server or VTR Captures, including when, for how long, and what to capture
- Configuration and Control of up to 20 Routing switchers, (manufacturer, inputs, outputs, levels, input name assignments, and device assignments)
- Configuration and control of up to 30 VTRs, DVD players etc. (manufacturer, control protocol, TC source, port, and desired Preroll)
- Traffic system setup to let us create Play Lists from your schedule, and provide an as run log in your format, as well as pre defining which devices to use for certain applications to make further PlayList editing minimal
- Individual PlayList Channel configuration, which permits defining the default server to use, playback channel to use, router to use, how to resolve conflicts etc
- General setup to permit you to select your favorite typeface and font size for all PlayList, Element and Sequence displays, auto save of event lists etc
- Automation Grid fields may be sized, named, and ordered to fit your requirements
- Tally Outputs and numerous programmable General Purpose Inputs for triggering Breaks, providing audible warnings etc.
- The MA210watch program may be run simultaneously to restart, reload and pick up where it left off, should it have been interrupted for any reason

General:

- Designed for easy learning, most users are comfortable operating a MATCO in within an hour
- Manual Control of ALL Devices.
- Built in Element Checking to warn you if material to be played is missing or has an incorrect duration, as well as a predefined wild card list of elements to substitute.
- One button Preview of ALL Attached Video Server(s) content on the assigned preview channel.
- Loss of either Network or serial connectivity warning
- Dual 10/100/1000 LAN ports for redundancy.

Editing:



- Play Lists or Record Lists may be created manually, or automatically created from Traffic System Schedules.
- Cut, Copy and Paste blocks of PlayLists for easy editing within the same channel, or from channel to channel
- Play/Record Lists may be altered on the fly .. three seconds prior to airing
- Automatic or Manual Recalculation of Start times whenever changes are made
- Play Lists may be automatically loaded or appended at any scheduled time to facilitate unattended operation
- Remote workstation software included.

Displays:

- Easy to use on Line Help Files (right click on almost anything for help on it)
- Individual Channel Displays, along with an ALL Channel display, where you select which
- Channels to display (up to 6) for viewing what's happening NOW.
- Displays of all attached servers Element and Sequence Inventory. Just double-click to place either anywhere in a Play List

Specifications:(Subject to change without notice)

Packaging: 1.75 Industrial Rack Mount Unit

PC-based: The core computer is a PC running the Microsoft© Windows Operating System

System Drives: Floppy Drive, 160GB Mirrored System Drives, DVD-ROM

I/O: PS/2 Keyboard and Mouse, VGA, 2 x Gigabit Ethernet (RJ-45)

Serial SMPTE input for clock synchronization.

8 Tally/General Purpose Outputs and 4 General Purpose Inputs

Software: Built in Software (Matco MA-210-SO) and remote slave Software (MA-210-RN) for remote Network access

15000 Stetson Rd. Los Gatos, CA 95033
Sales 800 348-1843 FAX 408-353-8781
Support 408-353-3820

Web: www.MATCO-video.com
Email: Sales@MATCO-video.com