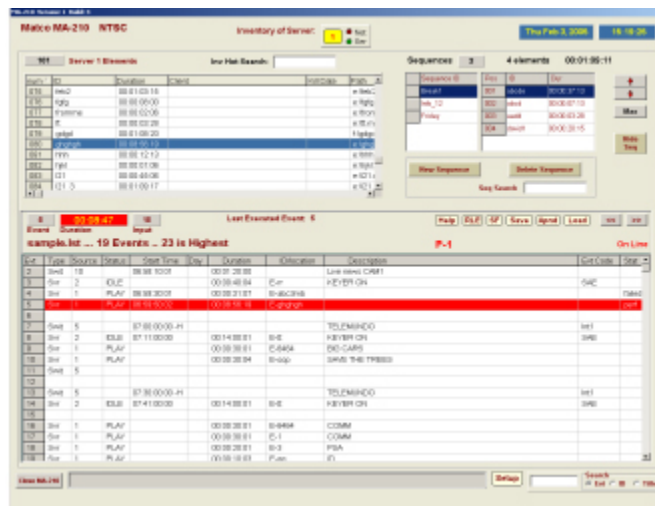


Features:

Configuration:

- In addition to individual Play List channels, there is a separate Record List Channel for scheduling Server or VTR Captures. Includes start times, duration, and what input to capture
- General setup to permit you to select your favorite typeface and font size for all PlayList, Element and Sequence displays, auto save of event lists etc
- Automation Grid fields may be sized, named, and ordered to fit your requirements. You can even create User definable columns.
- Tally Outputs and numerous programmable General Purpose Inputs for triggering Breaks, providing audible warnings etc.
- The Server Watch program may be run simultaneously to restart, reload and pick up where it left off, should it have been interrupted for any reason

Editing:



- Play Lists or Record Lists may be created manually, or automatically created from Traffic System Schedules.
- Cut, Copy and Paste blocks of PlayLists for easy editing within the same channel, or from channel to channel.
- Play/Record Lists may be altered on the fly .. three seconds prior to airing.
- Automatic or Manual Recalculation of Start times whenever changes are made.
- Play Lists may be automatically loaded or appended at any scheduled time to facilitate unattended operation.
- Interface to traffic system
- As-Run logging for billing reconciliation

Displays:

Easy to use on Line Help Files (right click on almost anything for help on it).

Individual Channel Displays.

- Displays of all Element and Sequence Inventory. Just double-click to place either anywhere in a Play List, easier than drag and drop.

Automation is available in 3 levels

- **Level 1:(Standard on all servers)**
The ability to create and execute Event Lists made up of Elements or Sequences. These Events may be executed manually, using the Clock in the Server, or by the completion of the previous Event in the Play List. Groups of elements may be setup to Loop indefinitely. A tally output is also available for each playback channel to turn on or off downstream keying. The Internal Automation will also takes GPI triggers from a DTMF decoder in order to trigger local commercial insertion.
- **Level 2:(optional)**
The same as level 1 with the added capability of controlling an RS-232 remotely controllable Routing Switcher, and the addition of Switcher only events in the Event Lists.
- **Level 3:(Optional)**
Adds the ability to schedule VTR Events in the Play Lists.

